

Segment duplication instructions

A. Attach and screw the segment cuvette into the base plate. Isolate and fix the cuvette with combisil®



D. Insert the double-bevelled aluminium pins



B. Fill the cuvette with duplication gel



E. Spray the duplicate form with easyflow (silicone remover)



C. Alternatively use a complete cuvette



F. Attach and screw the base plate to the filled duplicate form with aluminium pins (Do not leave aluminium pins in the fireproof gel in the event of fire)



Information regarding drill bit changes / settings

G. Drill bit change: Disconnect from the mains, position the drill chuck with the Allen key (this is the reason why there is a hole in the drill chuck) so that you can loosen the headless screw from underneath with the Allen key



I. Drill bit depth settings: After the drill bit has been removed, insert the screwdriver and rotate the headless screw, upon which the drill bit sits, to the right. (The drill bit hole will become smaller and the pin will no longer sit so deep in the base plate.)



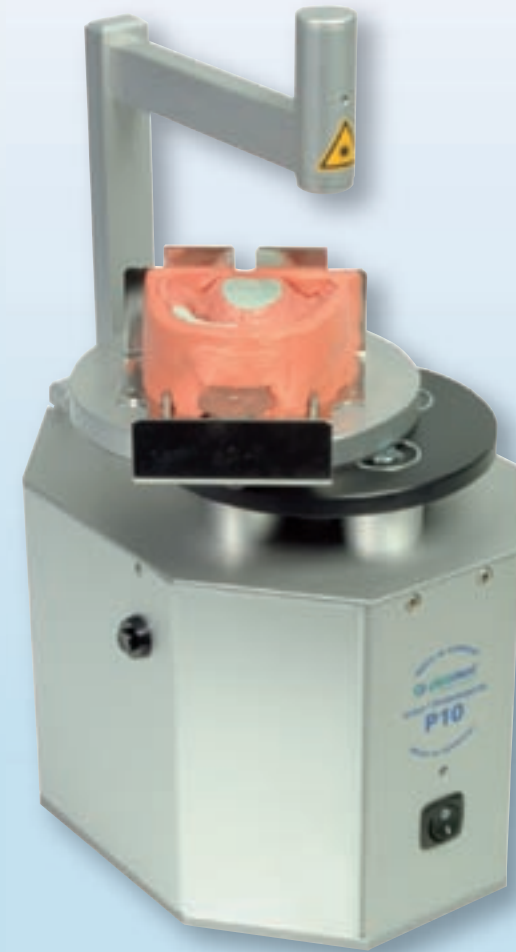
H. Change the drill bit, clamp and tighten the screw once again.



J. Carry out a test drilling and inspect the results after adjusting the settings



zeiser® -Modellsystem The Original



zeiser®

ZEISER Dentalgeräte GmbH
Patronatstraße 26 · D-71282 Hemmingen
Telefon: 0 71 50 - 39 79 19 · Telefax: 0 71 50 - 39 79 21
E-Mail: zeiser-dental@t-online.de · www.zeiser-dental.de

zeiser® P10 Drill Machine

Instructions for the **zeiser®** - Modelsystem – The Original

1. Sections of the impression that are not required are to be removed



2. Secure the impression on to the impression tray



3. Use combisil® mounting putty in order to isolate the impression



4. The combisil® must be cut in a linear way in order to establish the height of the crown of the tooth



5. A clear orientation plate makes the procedure much easier



6. Mark out the notches and pin holes in the combisil®



7. Screw in the magnetic plate with an "Inbus" Allen key



8. Or use a base plate with pre-mounted retainer plate



9. Place the base plate in the plate holder of the drill machine



10. Securely clamped base plate



11. Locate the holes which are to be drilled with a laser-point



12. Begin the drilling process and position the drill holes



13. Completed drilled base plate



14. Fit the base plate with pins



15. Base plate filled with pins



16. Reposition the pinned base plate in order to inspect it



17. Prepare the impression with easyflow for a bubble-free model



18. Use Zeiser-rock, tooth crown plaster from picodent



19. Pour out the impression with Zeiser-rock



20. Fill the base plate in the area around the pins with a small amount of plaster



21. Lower the base plate into the plaster pulp until it comes into contact with the combisil®



22. Carefully remove the excess plaster



23. Remove the model and the impression from the impression tray



24. Carefully loosen the tooth crown from the base after approx. 40 minutes and leave to freely expand



25. Treat the tooth crown with a tooth crown polisher or a tool holder



26. Saw the tooth crown with a diamond blade



27. Further treat individual segments with a sanding tool



28. Finished Zeiser Model with an exact fit on the base plate



29. Prepare the articulation plaster



30. Fix the articulation plaster onto the Snap-On plate and place into the articulator



31. Base plate and Snap-On plate for the perfect Split-cast



32. Base plates are available in various colours and 2 sizes. Design your own "business card"

